

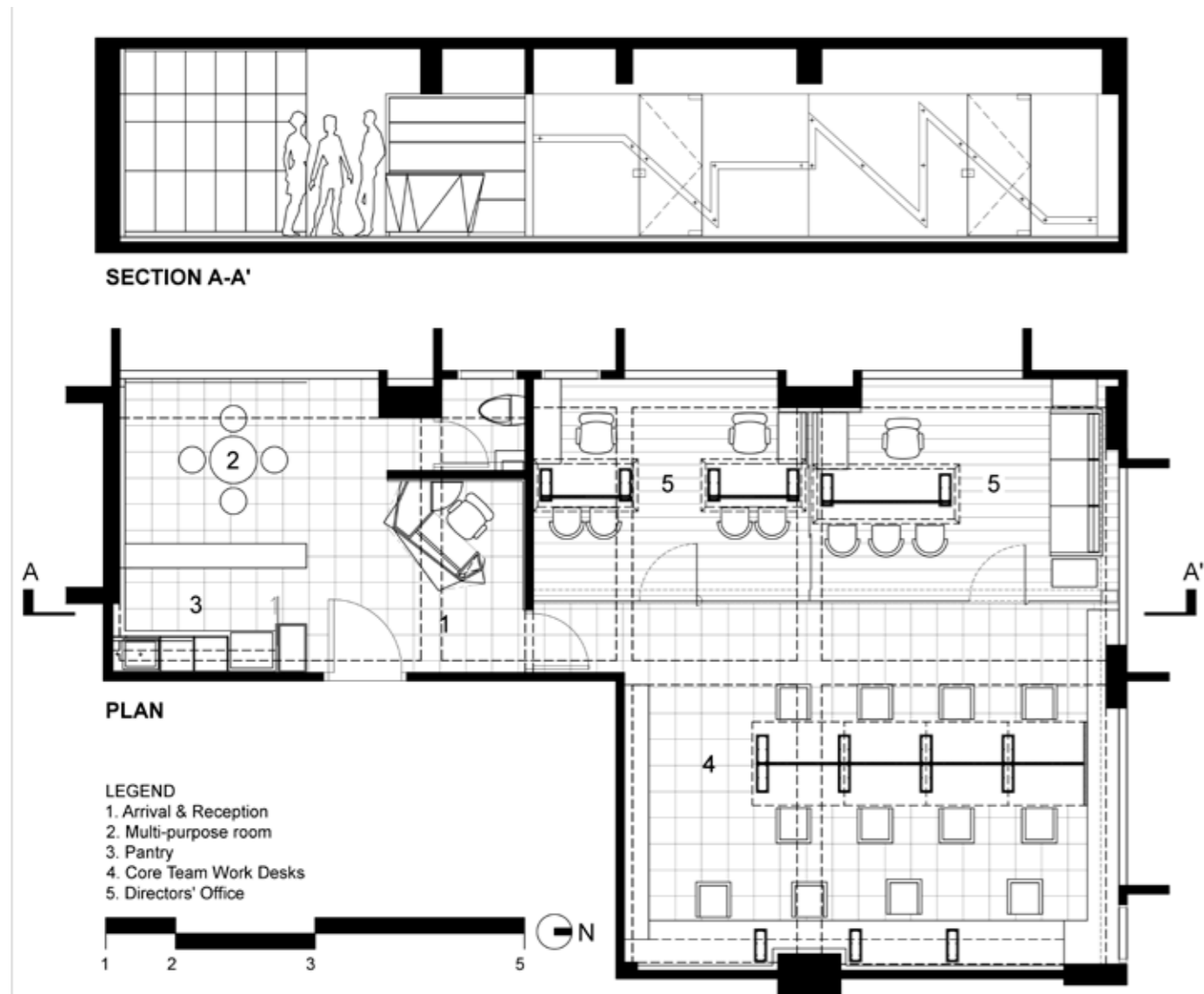
# Refined Rawness

The ReBar Office, Ahmedabad, India

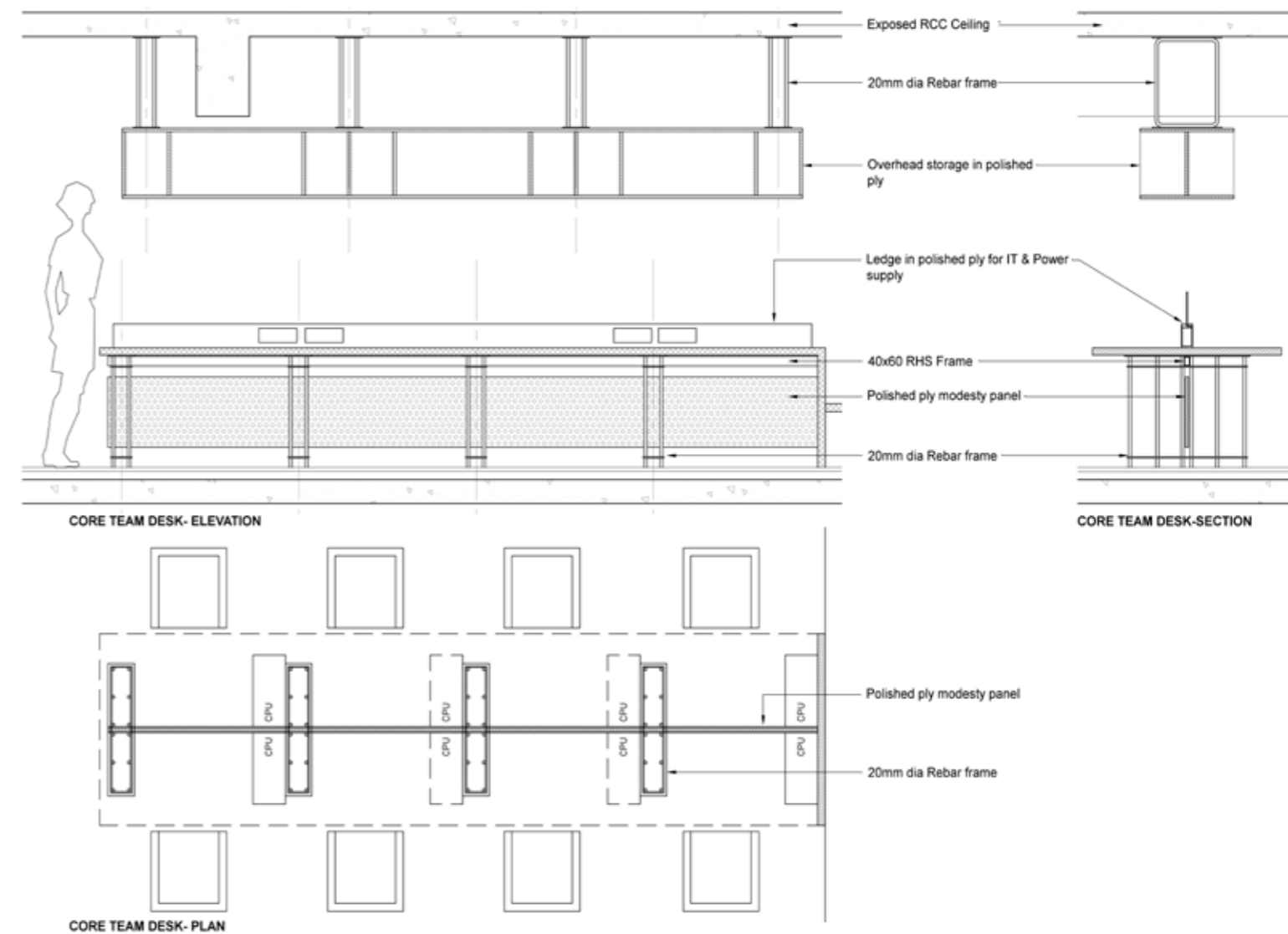
The minimalist nature of the design, the overall layering of finishes, and the use of reclaimed steel emphasizes PVDRS studio's focus on sustainability. As highlighted by Dr Keyur Vadodaria, the project critically looks at the role interior design can play in workplaces and how people will respond to and interact with elements and spaces.

*Text, Drawings: PVDRS Architects and Interior Designers  
Images: Radhika Pandit*





↑ Plan, Section & Details



PVDRS were approached by one of India's largest supplier of ET TMT reinforcement bars to carry out the interior design of their new office. Over their fifteen years of business, the company had grown substantially and was operating from three separate offices. The primary brief was to relocate and house the entire team under one roof in a manner that it would express a feeling of one 'family'.

Significant amount of research has been conducted to investigate the advantages and disadvantages of open-plan offices. The advantages are manifold, including savings in space and hence capital costs, ease of communication and exchange of ideas, improved employee and employer relationship and building up of team spirit, ease of carrying out group work as well as supervision of staff and reduction of recurring expenses. On the other hand, disadvantages of open-plan offices range from having a lack of privacy, concentration being hampered and seniority being overlooked. Noise could also possibly be a problem.

Hence, in response to the brief, PVDRS developed an interior layout



↑ Open Plan layout.



↑ Glass partition characterized by a 'yellow band'.

with a combination of open-plan and segmented work spaces. The employee work desks were located in an open-plan layout, allowing them to communicate and interact with each other in a more effective way and thereby evoking a spirit of 'family'. The core team was located in the centre of the open-plan, their work desks arranged such that they faced each other without any partitions, thus generating a feeling of 'togetherness'. The senior team of accounts were located along the peripheral wall. They were a part of the entire team and yet their dedicated work desks facing the tag boards ensured their seniority was not compromised. Likewise, Directors were provided dedicated cabins, so that their privacy was maintained. The frameless glass partition separated the director's cabin and the open-plan work space, thus ensuring ease of supervision. The glass partition was characterised by the 'yellow band' which not only took care of health and safety issues but also expressed in abstract, both the company's initials and its branding in colour. It also served as the door handle as well as a strengthening members for the frameless glass doors and panels.



↑ Full length-height storage.



↑ Floorings & Ceilings.

A multipurpose space was provided adjacent to the reception. This space serves as breakout space for team meetings, a place to have lunch and tea breaks, a quiet space for conversations that require privacy, a waiting area for visitors. One of the walls has a graphic that describes the motto and work ethics of the company, whilst the other wall is designed as a storage element with a space for exhibiting the achievements of the company.

The entrance area is characterised by a reception table that is multi-faceted, thus enhancing the proportions of an otherwise small and tight space.

The structural interior design as well as the design of furniture and fittings was aimed at achieving a raw yet refined interior. Overall, minimum changes were done to the existing shell of the office.

The flooring in all areas (except the director's cabin) is grey cement tiles, customised in collaboration with the developers of the building. Rustic burma teak LWF flooring was used in the Director's cabin to differentiate it from rest of the office areas.

The ceiling was left exposed and painted black with exposed electrical conduits and services to create an intense environment, focusing on the work desks.

Full length-height storage in lacquer polished saw cut veneer was provided along the peripheral walls in common work areas. The detailing of these units is such that there are no cabinet shutter knobs or handles, thus providing a seamless surface.



↑ Use of Reinforcement bars in furniture.



↑ Reception Wall.



↑ Breakout space for team meetings.

The reception wall was finished in travertine marble, with its pores left unfilled and unfinished, in line with the overall palate of raw and refined interiors. A bespoke lighting profile was designed and installed on the travertine wall to receive digitally printed glass panels of the logos of the products that the company deals with. The profile was designed such that as the company grows further and offers more products, further glass panels can be added on with ease.

The work stations and overhead storage elements were custom designed by PVDRS. Directors' work desk are differentiated by the use of travertine stone tops whilst core team work desk tops have been given a white laminate top. Modesty panels of all work desks are from lacquer polished marine grade WP plywood.

Megha Patel-Vadodaria highlights, "The project innovatively uses reinforcement bars, reclaimed from construction sites, as compression and tension members in furniture. We have also used reinforcement bars as knobs in pullout drawers of the pantry! Through a careful selection of materials and detailing, this project explores 'rawness' in interiors". ■

#### FACT FILE:

Project	:	The Re-Bar Office
Location	:	Ahmedabad, India
Interior Designer	:	PVDRS Architects and Interior Designers
Design team	:	and Megha Patel-Vadodaria, Dr Keyur Vadodaria
Client	:	Mukesh Shah (Vishal Sales Pvt Ltd)
Project Area	:	1100 sft
Carpentry contractors	:	Laxman bhai Mistry
Electrical contractors	:	Hitesh bhai
Initiation of Project	:	August 2016
Completion of project	:	May 2017
Photographs	:	Radhika Pandit